



Evo America, LLC
20360 SW Avery Ct.
Tualatin, OR 97062
503-626-1802
evoamerica.com

Project: _____
Location: _____
Item #: _____ Qty: _____
Model #: _____

AIA #

SIS#

10-0070-DCS

Model# 10-0070-DCS

Evo® Affinity 30Gp DCS



Gas Display Cooking Station

INDOOR

Circular Cooktop With Display Cooking Station

- 30" (762mm) circular black seasoned steel cooking surface.
- 1/4" (6.35mm) thick conditioned steel cooking surface retains heat for more consistent temperatures.
- Two circular temperature zones: inner and outer surface.
- Variable temperatures 225°F to 525°F (121°C to 274°C).
- Natural Gas 36,267 BTUs, LP Propane 32,307 BTUs.
- Knobs separately control inner and outer burners.
- Electronic push button ignition and standing gas pilot light.
- Open storage space under cooktop.
- Locking casters or optional adjustable seismic feet.
- Natural Gas or LP Propane gas option.

Designed For Display Kitchens And Cafeterias

- Zero clearance to adjoining counters and cabinetry.
- Type-I ventilation hood recommended
- Stainless steel construction for easy cleaning.

Easy Operation, Easy Maintenance, Easy Cleanup

- Food service staff skill level: Intermediate.
- Cooking techniques: sauté, braise, flattop (plancha) grilling, deep fry, pan fry, roast, poach, steam, toast.
- Cooktop surface is extremely durable and easy to clean.
- Stainless steel cabinet is easy to clean.

SHORT FORM SPECIFICATIONS:

The Evo Affinity 30Gp Display Cooking Station has a 30" (762mm) diameter, 1/4" (6.35mm) thick, black seasoned steel cook surface heated underneath by inner and outer gas tube burners. Surface temperatures range from 225°F to 525°F (121°C to 274°C) from the center to the outside edge. The Affinity 30Gp DCS has a free standing stainless steel cabinet with open storage space. Available with either Natural Gas or LP Propane. An ideal solution for any indoor display cooking venue.

Data

Model	Cook Surface	Dimensions			BTU Rate	Net Weight	Ship Weight
		H	W	D			
10-0070-DCS	30 Inches	39 3/4" 991mm	50" 1270mm	36" 914mm	NG 36,267 LP 32,307	345 lbs 157 kg	430 lbs 195 kg

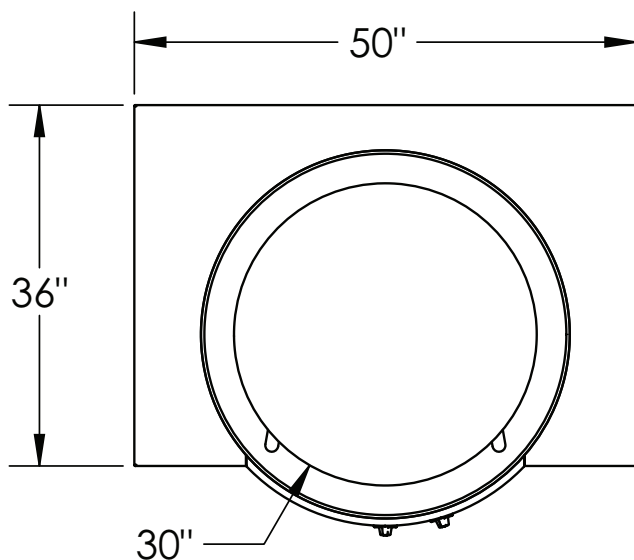


Due to ongoing product improvement, specifications are subject to change without notice.

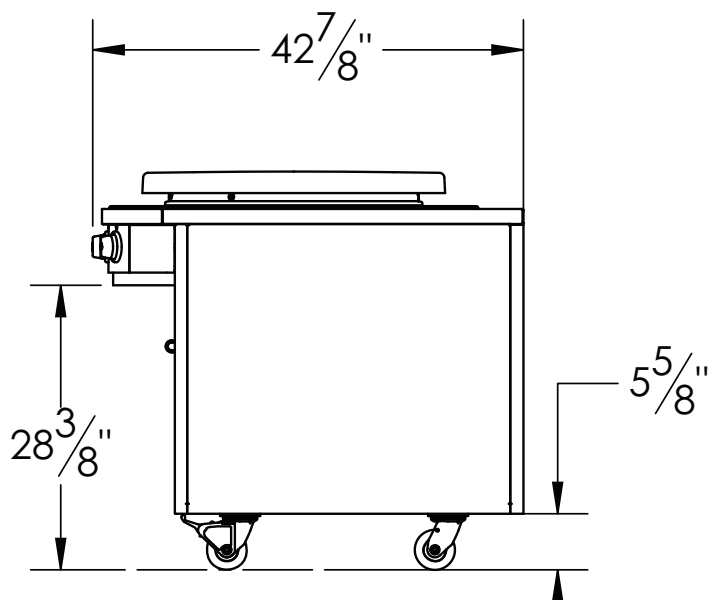
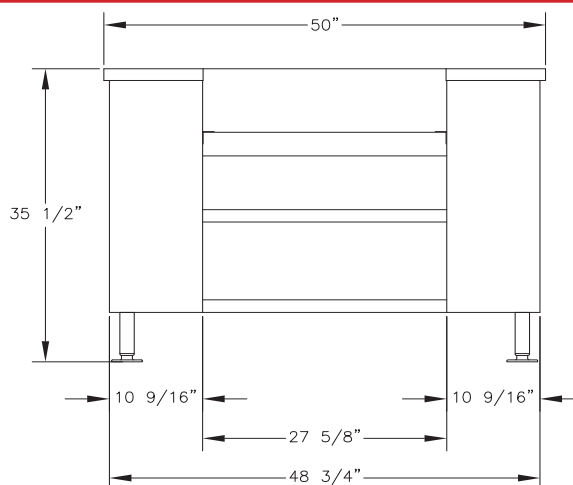


Approvals:

Available At:

Model# **10-0070-DCS****Evo® Affinity 30Gp DCS**

Available with seismic feet or locking casters

**INSTALLATION REQUIREMENTS**

Cooking surface must be installed level.
Use adequate ventilation.

NATURAL GAS CONNECTIONOPERATING PRESSURE

Inlet gas pressure of 7" water column.

INLET / SUPPLY CONNECTION

1/2" NPT to 3/8" Flare supplied.

BTUs: 36,267

CONNECTION LOCATION

Gas inlet right rear chassis.

LP PROPANE CONNECTIONOPERATING PRESSURE

Inlet gas pressure of 11" water column.

INLET / SUPPLY CONNECTION

1/2" NPT to 3/8" Flare supplied.

BTUs: 32,307

CONNECTION LOCATION

Gas pipe right rear chassis.

DIMENSIONSMAXIMUM (H X W x D)

39-3/4" x 50" x 36" (991mm x 1270mm x 914mm)

COOK SURFACE

30" diameter (762mm)

WEIGHT

NET: 345 lb EST. (157 kg)

SHIP: 430 lb EST (195 kg)

CRATE DIMENSIONS: 43.5" x 58" x 44" (1104mm x 1473mm x 1117mm)

STANDARD FEATURES

- 30" circular black seasoned steel cook surface built into stainless steel cabinet with storage shelves.
- 2 removable spill over trays contained in front opening doors.

ACCESSORIES INCLUDED

- Professional grill surface cleaning kit (3M brand) - Includes handle, cook surface cleaning pad and screen.
- 2 stainless steel spatulas and 1 stainless steel scraper.
- Owner's Manual & Use and Care Instructions.

Evo America, LLC, 20360 SW Avery Ct., Tualatin, OR 97062
Ph 503-626-1802 • evoamerica.com • sales@evoamerica.com

Evo is protected under U.S. Patents 9,897,328, 9,869,474, 10,139,113, 9,903,595, 10,842,540, 7,825,353 and U.S. Patents Pending.