



## INSULATED COLD & HOT MULTI-WELL FOOD WELLS

SERIES: BM-80 – DRAIN/NON-DRAIN, UL LISTED/UL REGISTERED



The APW Wyott cold and hot food wells provide the most flexible food service solution by switching from hot to cold holding at the flip of a switch.

Hot wells can be ordered with up to six wells and features an automatic water filling system. Thermostatic controls with flexible conduit and recessed bezel are standard.

The immersed heating system quickly transfers energy to well water for fast startup and recovery. The refrigeration system has up to 3/4 hp compressors. Units are designed to be operated wet, not dry.

### FEATURES AT A GLANCE

- Select up to size wells
- Automatic water filling system
- Quickly switch from hot to cold holding
- Thermostatic controls with flexible conduit and recessed bezel are standard
- Up to 3/4 hp compressors for refrigeration
- One inch drainage system, and screen
- Heating feature has to be used in wet operation

### OPTIONS

- 2 to 6 standard inset pans
- Installation in metal or wooden counter

### WARRANTY

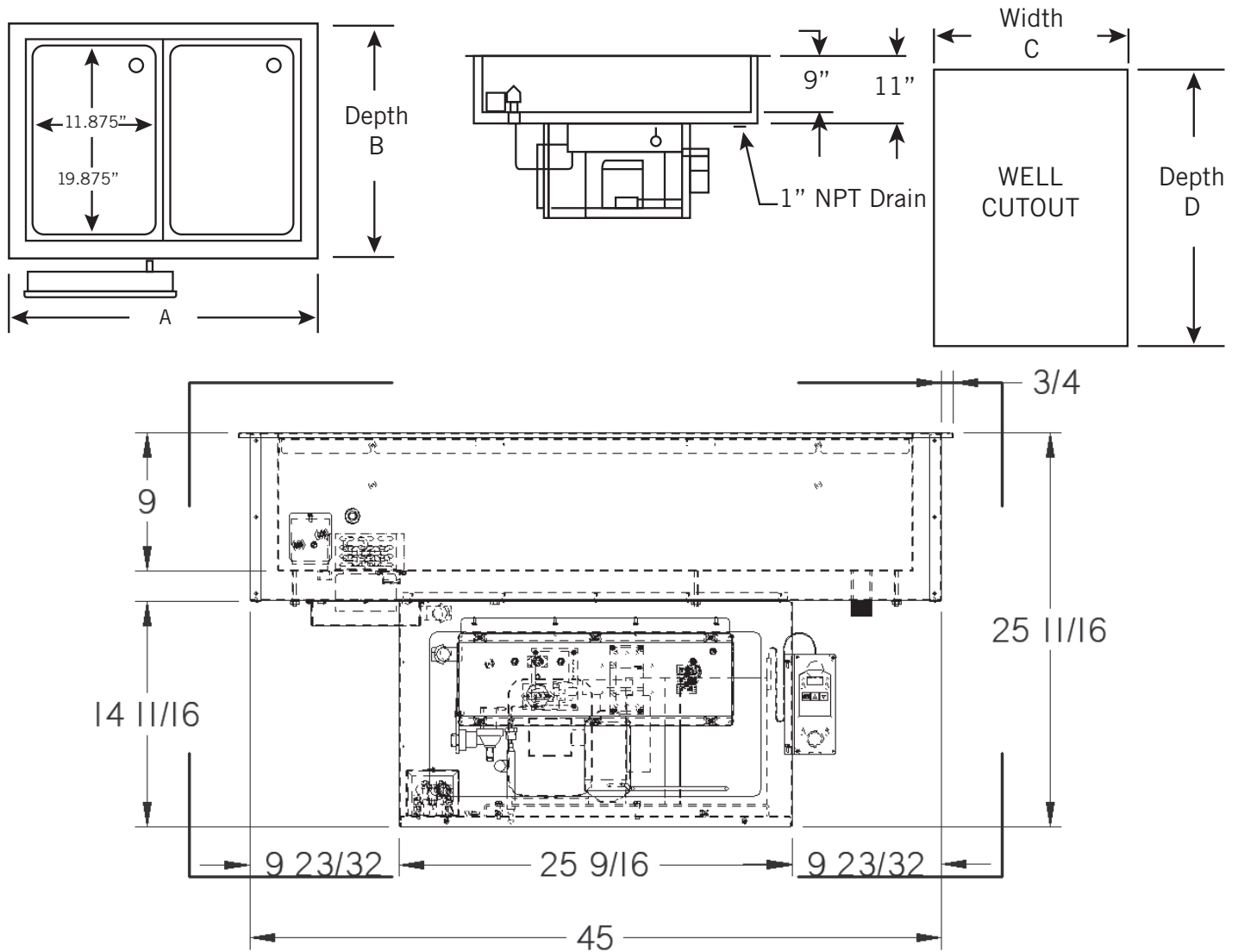
APW Wyott Drop-In Cold Wells are backed by a 1-year parts and labor warranty, including on-site service calls within 50 miles of authorized service technicians.

### CERTIFICATIONS

Certified by the following agencies:



## EQUIPMENT DIMENSIONS



## MECHANICAL SPECIFICATIONS

| Model # | Volts       | Compressor HP | Amps      | Overall Exterior Dimensions<br>Width (A) x Height x Depth (B) (inches / mm) | Drain | Well Cutout<br>Width (C) x Depth (D) | Ship Weight<br>(lbs. / Kilos) |
|---------|-------------|---------------|-----------|---|-------|--------------------------------------|-------------------------------|
| CHDT-2  | 120/208/240 | 1/4           | 14.5/15.9 | 32.75" x 25.7" x 27.125" (832 x 653 x 689)                                  | Yes   | 31.5" x 25.875"                      | 215 lbs. (97.52 kg)           |
| CHDT-3  | 120/208/240 | 1/3           | 21.4/23.7 | 46.5" x 25.7" x 27.125" (1,181 x 653 x 689)                                 | Yes   | 45.25" x 25.875"                     | 243 lbs. (110.22 kg)          |
| CHDT-4  | 120/208/240 | 1/2           | 25.6/28.3 | 60.25" x 25.7" x 27.125" (1,530 x 653 x 689)                                | Yes   | 59" x 25.875"                        | 288 lbs. (130.63 kg)          |
| CHDT-5  | 120/208/240 | 3/4           | 44.2/48.6 | 74" x 25.7" x 27.125" (1,880 x 653 x 689)                                   | Yes   | 72.75" x 25.875"                     | 298 lbs. (135.17 kg)          |
| CHDT-6  | 120/208/240 | 3/4           | 44.2/48.6 | 87.75" x 25.7" x 27.125" (2,229 x 653 x 689)                                | Yes   | 86.5" x 25.875"                      | 320 lbs. (145.15 kg)          |

Freight Class: 100 FOB: Allen, 75013

APW Wyott reserves the right to modify specifications or discontinue models without incurring obligation. Dimensions nominal.