



## DIRECT STEAM LEG-MOUNTED TWIN TILTING MIXER KETTLES



### SPECIFICATIONS:

Shall be a Crown model \_\_\_\_\_, direct steam, twin tilting kettle operating at a maximum of 30 psi. Construction shall be welded stainless steel type 304 satin finish. A double wall kettle interior shall form a steam jacket around the lower 2/3 of the kettle with 316 stainless steel liner for high acid content products. The bottom of the kettle shall be of hemispheric design for maximum heat transfer. The tubular legs shall be constructed of stainless steel pipe fitted with four hole, adjustable, flanged feet for securing to the floor. A sealed stainless steel tilt mechanism shall permit the kettle to tilt forward a full 90° for complete emptying. The tilt mechanism shall be self locking for positive stop action.

### MIXER FEATURES:

The mixer is a variable speed unit powered by a 5 hp electric motor driving a hydraulic pump. Two agitators shall be included, a primary stainless steel scraper/agitator, and a secondary high speed mixer. Both agitators shall be removable for cleaning and no tools will be required for removal.

The console front to have the main power switch, mixer lift switch and variable speed control.

The bridge is constructed of 10 gauge stainless steel and contains two heavy duty hydraulic motors to drive the agitators. The bridge shall be power tilt, and swing 140° out of the way for kettle tilting or cleaning.

MODEL	CAPACITY	
DLTM-40-2	2 x 40 Gallon	2 x 152 Liter
DLTM-60-2	2 x 60 Gallon	2 x 227 Liter
DLTM-80-2	2 x 80 Gallon	2 x 303 Liter
DLTM-100-2	2 x 100 Gallon	2 x 380 Liter

### OPERATION SHALL BE BY:

Direct steam at a minimum of 5 PSI (34 kPa) and maximum of 30 PSI (207 kPa). Hydraulic power supply is standard either:

- ☐ 208 Volts, 3 Phase, 60 Hz
- ☐ 240 Volts, 3 Phase, 60 Hz

### OPTIONAL ITEMS AT EXTRA COST:

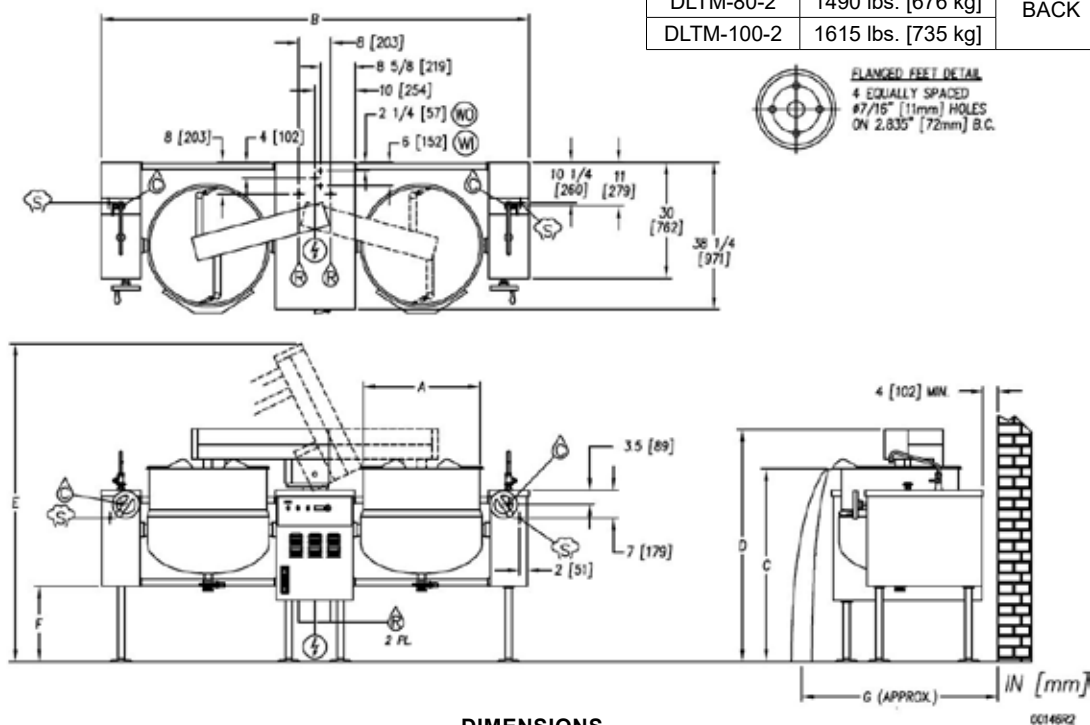
- ☐ Swing faucet on left or right console
- ☐ 2" manual butterfly valve (BV-2)
- ☐ 3" manual butterfly valve (BV-3)
- ☐ 480 VAC, 60 Hz, 3 Phase (for motor)
- ☐ Ball float trap (BFT-)
- ☐ Quick chill system (QCS-)
- ☐ Steam control assembly (STA-)
- ☐ High pressure operation (HP-50)
- ☐ Two piece lift off cover (MC-)
- ☐ Strainer for butterfly valve (MKS)
- ☐ Etched gallon markings (GM-)
- ☐ Etched litre markings (LM-)
- ☐ Pour lip strainer (TKS-)
- ☐ Kettle heat shield (KHS-)

Job \_\_\_\_\_  
Item# \_\_\_\_\_



Models: ☐ DLTM-40-2☐ DLTM-60-2☐ DLTM-80-2☐ DLTM-100-2

MODEL	SHIPPING WEIGHT	MINIMUM CLEAR- ANCE	
DLTM-40-2	1360 lbs. [617 kg]	SIDES	0
DLTM-60-2	1440 lbs. [654 kg]		
DLTM-80-2	1490 lbs. [676 kg]	BACK	4" [102]
DLTM-100-2	1615 lbs. [735 kg]		



DIMENSIONS

MODEL	CAPACITY	UNITS	A	B	C	D	E	F	G
DLTM-40-2	40 Gal Each (151 liters)	inches (mm)	26" (660)	102" (2591)	43.25" (1099)	55" (1397)	75.63" (1921)	15.13" (384)	56" (1422)
DLTM-60-2	60 Gal Each (227 liters)	inches (mm)	29.5" (749)	108" (2743)	49" (1245)	58.5" (1486)	80" (2032)	19.5" (495)	58" (1473)
DLTM-80-2	80 Gal Each (303 liters)	inches (mm)	33" (838)	116" (2946)	49" (1245)	58.5" (1486)	80" (2032)	19.5" (495)	60" (1524)
DLTM-100-2	100 Gal Each (380 liters)	inches (mm)	35.5" (902)	121" (3073)	49" (1245)	58.5" (1486)	85" (2159)	19.5" (495)	63" (1600)

## ELECTRICAL CHARACTERISTICS

MODEL	AMPS PER LINE		
	208V	240V	480V
DLTM-40-2	14.0	14.0	7.0
DLTM-60-2			
DLTM-80-2			
DLTM-100-2			

## SERVICE CONNECTIONS

- ⚡ – ELECTRICAL CONNECTION: to be as specified on data plate.
- ⚙️ – STEAM SUPPLY: 3/4" IPS. 5-30 PSI ( 34-207 kPa) optional 5-45 PSI (34-310 kPa).
- 💧 – COLD and HOT WATER: 3/8" O.D. tubing to faucet. (OPTIONAL)
- 💧 – CONDENSATE RETURN: 1/2" IPS.
- ⚙️ – OIL COOLER WATER IN: 3/8" tube bulkhead union.
- ⚙️ – OIL COOLER WATER OUT: 3/8" tube bulkhead union.

**INTENDED FOR COMMERCIAL USE ONLY.  
NOT FOR HOUSEHOLD USE.**



70 Oakdale Road, Toronto ON, Canada M3N 1V9  
(919) 762-1000 www.crownsteamgroup.com