

"UBSC-18" UNDERBAR STORAGE CABINET

Slim-Line, 18" Width

FEATURES:

- 18GA Stainless Steel Construction
- Type 300 Stainless Steel With #4 Polish, Satin Finish
- Slim Line 18" Deep Front To Back
- Standard Pre-Drilled Holes On Sides For Attaching Adjacent Units Together
- Removable Perforated Drainboard Insert For Increased Air Circulation
- Top Drain With Hose And Fittings
- Locking Hinged Door

SPECIFICATIONS:

- Top: 18GA Type 300 Stainless Steel
- Door: 18GA Type 400 Stainless Steel
- Backsplash: 18GA Type 300 Stainless Steel
- Sides: 18GA Type 300 Stainless Steel
- Bolt On 1-5/8" Stainless Steel Legs For Fast Installation
- 1" Adjustable Stainless Steel Bullet Feet
- Z-Clip To Mount To Wall
- Bolt To Adjacent Underbar Piece
- Mounting Options Allow For Flexible Installation
- Options To Remove Back Or Front And Back Legs For A Clean Installation
- Barbed 1/2" Drain With 1/2" Clear Hose And Fittings

CERTIFICATIONS:



UBSC-1824-R

ACCESSORIES

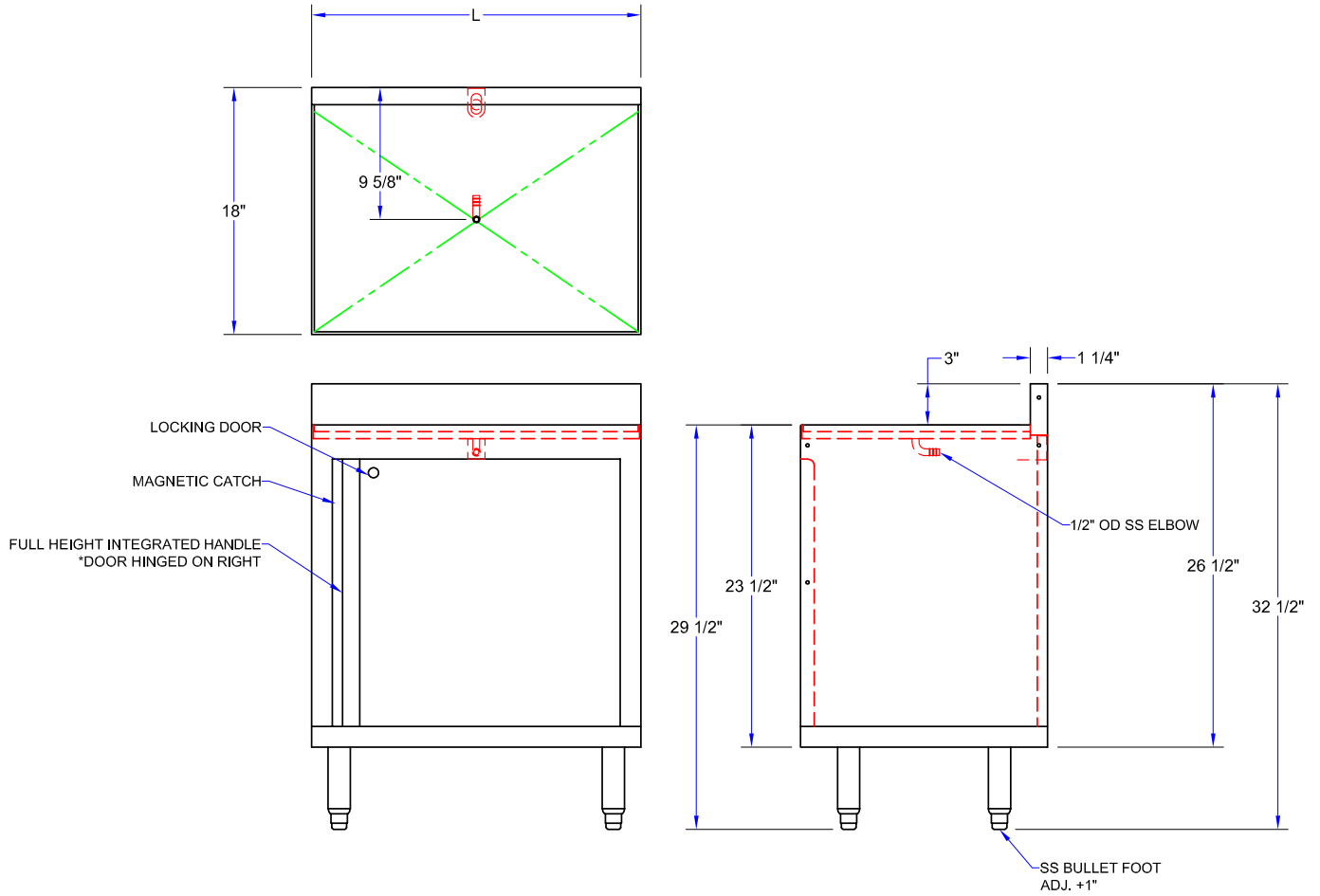
MODEL	DESCRIPTION
UBSS-18-L	Slim-Line Left Hand Side Splash
UBSS-18-R	Slim-Line Right Hand Side Splash
UBSCS-1618	Cabinet Shelf - 18" Length
UBSCS-1624	Cabinet Shelf - 24" Length

"UBSC-18" UNDERBAR STORAGE CABINET

MODEL	SIZE (LXWXH)	LENGTH (L)	WEIGHT (LBS)
UBSC-1818-R	18"x18"x32-1/2"	18"	47
UBSC-1824-R	24"x18"x32-1/2"	24"	57

ALL DIMENSIONS ARE TYPICAL. TOLERANCE +/- .500". JOHN BOOS & CO. RESERVES THE RIGHT TO CHANGE SPECIFICATIONS WITHOUT NOTICE.

DETAILED SPECIFICATIONS



"UBSC-18" UNDERBAR STORAGE CABINET

MODEL	SIZE (LXWXH)	LENGTH (L)	WEIGHT (LBS)
UBSC-1818-R	18"x18"x32-1/2"	18"	47
UBSC-1824-R	24"x18"x32-1/2"	24"	57

ALL DIMENSIONS ARE TYPICAL. TOLERANCE +/- .500". JOHN BOOS & CO. RESERVES THE RIGHT TO CHANGE SPECIFICATIONS WITHOUT NOTICE.