



GAS CONVECTION STEAMER

HIGH EFFICIENCY/PERFORMANCE

7, 10 AND 16 PAN CAPACITY



GSX-10HE

SPECIFICATIONS:

Crown convection steamer with individual gas steam generators for each cavity. The GSX-7HE has two compartments: (1) 3-pan and (1) 4-pan; GSX-10HE has two compartments: (2) 5-pans; GSX-16HE has two compartments: (2) 8-pans. The steamer shall be constructed of satin finish stainless steel type #304. The cooking chamber is a one piece all welded, #316 stainless steel with coved corners. The heavy duty door shall have an inner liner of stainless steel with a full perimeter gasket seal, an outer liner of one piece all welded stainless steel, and a positive lock and seal mechanism with spring release. Each compartment shall be provided with removable stainless steel pan supports. A stainless steel drip trough shall be integrally connected to drain to collect condensate when the doors are opened.

The control housing shall be constructed of stainless steel with a full access removable panel. Each compartment shall have individual controls which include an illuminated three way power switch (ON/OFF/Delime), a pilot ready light, a pilot cooking light, an ignition light, a 60-minute electric timer which sounds an audible signal at the end of the cooking cycle, solid state generator controls and electronic ignition for each generator. Steam flow to the cooking chamber shall be cut off when the door is opened and reactivated when the door is closed. Steamers are mounted on a 24" stainless steel cabinet base (GSX-16HE is mounted on a 36" cabinet base) with exterior hinged door and 4 stainless steel adjustable legs flanged feet for securing to the floor. The cabinet houses the generator(s), automatic blow down and drain box.

AGA/CGA Certified and NSF Approved.

SEE REVERSE SIDE OF SPEC SHEET FOR WATER TREATMENT SYSTEM STATEMENTS

Model	Compartments	Capacity
GSX-7HE	2	1-7 Pans (2-1/2")
GSX-10HE	2	1-10 Pans (2-1/2")
GSX-16HE	2	1-16 Pans (2-1/2")

OPERATION SHALL BE BY:

Gas fired, stainless steel steam generator(s) operating at 0 psi (0 kPa) with controls equipped for operation on 120 VAC, 1 Phase, 60 Hz.

- ☐ Natural gas
- ☐ L.P. gas

STANDARD FEATURES:

- Water Treatment System
- Stainless steel construction -including cabinet and generators
- Electronic ignition
- Coved interior corners
- Automatic generator blow-down
- Delime mode power setting
- Deliming port is located at the front of the generator for easy access to allow cleaning of the tank
- Split water connections for simple hook up for a treated water system.
- Left side access panel
- Thermostatically controlled drain
- Single drain connection
- Safety relief valve
- Separate controls and generator for each compartment

OPTIONAL ITEMS AT EXTRA COST:

- ☐ 220 VAC, 1 Phase, 50 Hz controls
- ☐ Correctional package
- ☐ 120 minute timer. (T-1202)
- ☐ Constant Steam. (CSF-2)
- ☐ Load Compensating Timer. (LCT-2)
- ☐ Sheet pan support, (SPS-2) GSX-16HE ONLY
- ☐ High sensitivity level controls for R.O. water (HSB-2)
- ☐ Casters

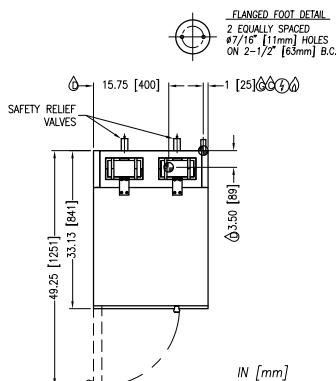
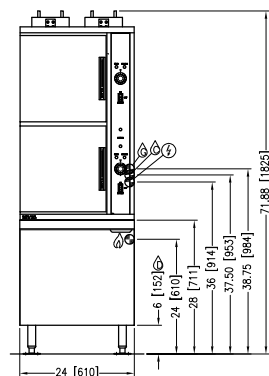
ACCESSORIES:

- ☐ Water in "Y" strainer (YS-1)
- ☐ Single pantry 60" (1.52m) spray hose and bracket (SP-SH).
- ☐ Double pantry 60" (1.52m) spray hose and bracket (DP-SH)



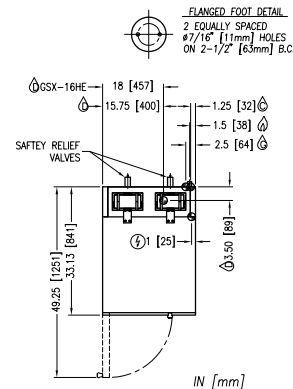
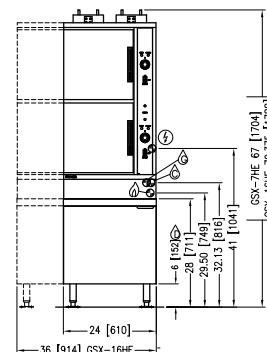
Models: ☐ GSX-7HE ☐ GSX-10HE ☐ GSX-16HE

MODEL	SHIPPING WT	GAS SUPPLY PRESSURE				CLEARANCE	
		BTU/HR.	kW/HR.	NATURAL	PROPANE	SIDES BACK	0
GSX-10HE	700lbs (318kg)	190,000	56	6"-14" (152-356mm)	12"-14" (305-356mm)	6 [152]	0



MODEL	SHIPPING WT	GAS SUPPLY PRESSURE				CLEARANCE	
		BTU/HR.	kW/HR.	NATURAL	PROPANE	SIDES BACK	0
GSX-7HE	650lbs (295kg)	140,000	41	6"-14" (152-356mm)	12"-14" (305-356mm)	6 [152]	0
GSX-16HE	900lbs (408kg)	190,000	56	6"-14" (152-356mm)	12"-14" (305-356mm)	6 [152]	0

• Use on non-combustible floors only.



SERVICE CONNECTIONS

- ⚡ – ELECTRICAL CONNECTION: Unless otherwise specified, Electrical Connection to be 120 Volts, 6. Hertz single phase with ground. Furnished with 6 foot cord with 3 prong plug. Maximum 4.0 amps.
- Ⓓ – DRAIN: 2" (51 mm) IPS piped to open floor drain. No solid connection.
- Ⓐ – GAS CONNECTION: 3/4" IPS supply line required.
- Ⓒ – CONDENSATE COLD WATER: 3/8" O.D. tubing at 25-50 PSI (170-345 kPa)
- Ⓔ – BOILER FEED WATER: 3/8" O.D. tubing at 25-50 PSI (170-345 kPa).

WATER QUALITY STATEMENT

Water quality is the major factor affecting the performance of your appliance. If you are unsure of water quality, consult a local water treatment specialist and have the water analyzed. Your water supply must be within these general guidelines:

Total dissolved solids.....Less than 60 PPM
 Total alkalinityLess than 20 PPM
 Silica.....Less than 13 PPM
 ChlorineLess than 1.5 PPM
 pH Factor7.0 - 8.5

Water which fails to meet these standards should be treated by installation of water conditioner.

CROWN WATER TREATMENT SYSTEM MUST BE USED, FOR THIS APPLIANCE TO BE COVERED UNDER WARRANTY*

*FAILURE OR MALFUNCTION OF THIS APPLIANCE DUE TO POOR WATER QUALITY IS NOT COVERED UNDER WARRANTY.

Reference www.crownsteamgroup.com for complete warranty details and restrictions.

**INTENDED FOR COMMERCIAL USE ONLY.
NOT FOR HOUSEHOLD USE.**



70 Oakdale Road, Toronto ON, Canada M3N 1V9
 (919) 762-1000 www.crownsteamgroup.com