



The Signature of Quality®

FEDERAL INDUSTRIES

A Standex Company

215 Federal Avenue
Belleville, WI 53508-9201

Phone: 800-356-4206

Fax: 608-424-3234

Email: geninfo@federalind.com

Website: www.federalind.com

Project Name: _____

Item #: _____

Model #: _____ Qty: _____

Approval: _____

AIA#

SIS#

HYBRID MERCHANDISER - Heated Self-Serve Over Refrigerated Self-Serve

Display more product and serve more customers
with presentation and value in mind.



CH4828SS/RSS4SC Shown

MODEL

DIMENSIONS

(Includes End Panels)

☐ CH3628SS/RSS3SC

36.25 x 39 x 69.75 (in)

921 x 991 x 1772 (mm)

☐ CH4828SS/RSS4SC

48 x 39 x 69.75 (in)

1219 x 991 x 1772 (mm)

STANDARD FEATURES

Refrigerated Self-Serve Bottom Display

- Black laminated exterior. Other finishes available.
- Black trim. Silver optional.
- Black interior, glass ends.
- LED Horizontal top and front light.
- Two tiers black metal shelves.
- Cord and plug. (Not available on six foot unit.)
- Electronic temperature control maintains 38° to 40° case temperature. Note: Case temperature will vary if the air curtain is disrupted.
- Thermometer
- R290 Refrigerant

Heated Self-Serve Top Display

- Two adjustable stainless steel heated shelves
- Sliding rear doors
- Stainless steel deck
- Black trim
- Three hinged lift-up front doors
- Thermometer

Lighting

- Incandescent top and shelf lights

Agency Approvals

- UL Safety and UL Sanitation Listed to NSF Type I conditions
- DOE 2017 Compliant

OPTIONAL ACCESSORIES

For Top Display

- ☐ Reflective Ends
- ☐ Reflective Rear Doors

For Self-Serve Refrigerated Base

- ☐ Energy Saving Night Curtain
- ☐ Silver Trim
- ☐ Special Base Finish
- ☐ Mirrored Interior Ends
- ☐ Security Night Cover
- ☐ Stainless Steel Steps in Lieu of Metal Shelves
- ☐ Reflective End Glass



WARRANTY*
One year Parts and Labor
2nd thru 5th year part
only service compressor
(U.S.A and Canada)

Note: Information is subject to change at any time.
Visit www.federalind.com for the most current specs.

Revised 8/1/2025

HYBRID MERCHANDISER - Heated Self-Serve Over Refrigerated Self-Serve

Product Specifications

Intended Environment: Type I - Designed to operate in maximum ambient conditions of 75°F (24°C) and 55% relative humidity unless noted otherwise in system information below.

Zone	Intended Product To Be Displayed	Avg Prod Temp °F/°C
All	Packaged Refrigerated Products	38°F / (3.3°C)

DIMENSION: xx"/(mm)

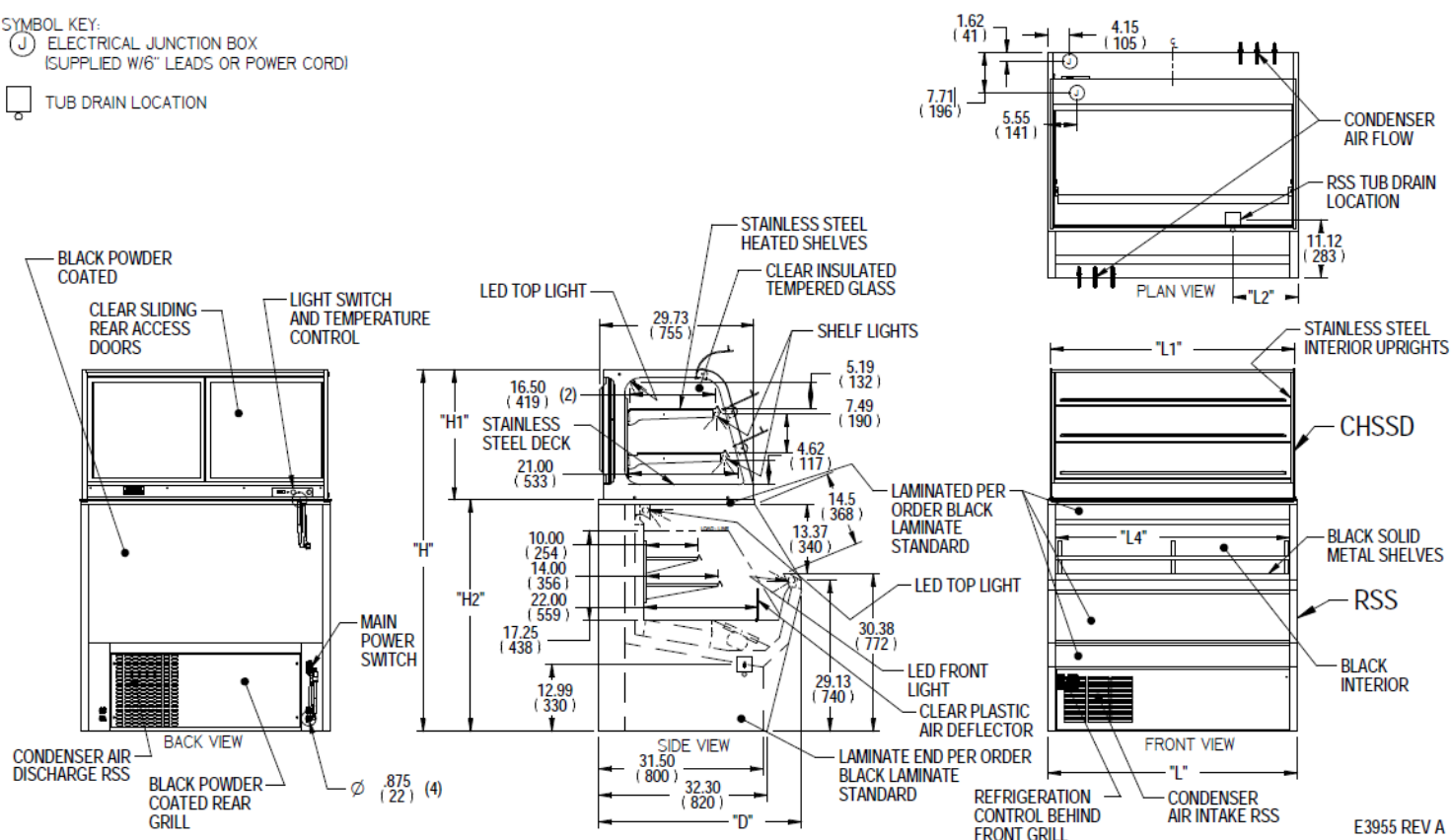
DIMENSION TOLERANCE +/- 0.19 (4.8)

SYMBOL KEY:

SYMBOL KEY:

SYMBOL KEY:
 (J) ELECTRICAL JUNCTION BOX
 (SUPPLIED W/6" LEADS OR POWER CORD)

 TUB DRAIN LOCATION



													SELF CONTAINED						
		HYBRID INFO			INDIVIDUAL CASE INFO														
MODEL	DIMENSION			CASE LOCATION	INDIVIDUAL CASE	DIMENSION			TUB DRAIN		SHELVING		INTERIOR VOLUME CU FT	ELECTRICAL			REFRIGERANT	CONDENSATE REMOVAL	SHIP WEIGHT LBS KILO
	L	D	H			L1	H1	H2	L2	# OF	L3	L4		2-WIRE + GROUND 120/60/1					
	in	in	in			in	in	in	in	TIERS	in	in							
	mm	mm	mm			mm	mm	mm	mm		mm	mm							
CH3628SS/RSS3SC	36.25	39.00	69.75	TOP	CH3628SSD 1	35.0 889	25.1 638			2	33.5 851		9.25	10.2	15	NEMA 5-15P CORD & PLUG		847 LBS	
	921	991	1772	BOTTOM	RSS3SC 1			44.63 1133	12.50 318	2		33.3 845	7.18	10.4	20	NEMA 5-20P CORD & PLUG	R290	CONDENSATE PAN	384 KILO
CH4828SS/RSS4SC	48.00	39.00	69.75	TOP	CH4828SSD 1	47.0 1194	25.1 638			2	45.5 1156		12.50	12.5	15	NEMA 5-15P CORD & PLUG		1010 LBS	
	1219	991	1772	BOTTOM	RSS4SC 1			44.63 1133	12.50 318	2		45.0 1143	9.72	12	20	NEMA 5-20P CORD & PLUG	R290	CONDENSATE PAN	458 KILO

- Refrigerated cases are designed to operate in a maximum of 75°F (24°C) ambient and 55% relative humidity.
- Due to continuing engineering improvements, specifications are subject to change without notice.
- On the six foot display a separate 120/60/1 15 AMP circuit is required for the condensate evaporator.



The Signature of Quality®

FEDERAL INDUSTRIES

FEDERAL INDUSTRIES
A Standex Company

215 Federal Avenue Belleville, Wisconsin 53508-9201

Phone: 800-356-4206

Fax: 608-424-3234

Email: Geninfo@Federalind.com

Website: Federalind.com