



# BEVERAGE-AIR®

|                 |            |
|-----------------|------------|
| Project: _____  | AIA# _____ |
| Item: _____     |            |
| Location: _____ | SIS# _____ |
| Approved: _____ |            |

## HORIZON BOTTOM MOUNT REACH-IN

HBF19HC Solid Door Reach-in Freezer  
Hydrocarbon Series

MODEL:  
HBF19HC-1



**3 Year Parts/Labor Warranty**  
**Additional 4 Year Compressor Warranty**

### CABINET CONSTRUCTION

- Stainless steel front, side, and grille (galvanized back & bottom)
- Stainless steel interior
- LED lighting
- Full electronic control with one-touch defrost
- Expansion valve technology
- One-piece grille allow easy removal/installation for preventative maintenance
- Door lock (solid doors only)
- Self closing door with 120° stay open feature
- Spring-loaded style hinges
- Plug-in magnetic door gaskets
- Anti-microbial door handle
- Three (3) heavy duty epoxy coated wire shelves
- 6" Casters with two (2) brakes

### OPTIONS & ACCESSORIES

- 3" caster or 6" legs
- Epoxy shelves
- Shelf clips
- Remote option\* (see note on back page)

### REFRIGERATION SYSTEM

- Uses environmentally friendly, energy efficient R290 refrigerant, and meets all regulatory requirements for CARB, SNAP, DOE & more
- Hot gas condensate evaporator
- Adaptive defrost
- Epoxy coated evaporator coil
- Freezer capable of maintaining product temperature down to -10°F

HBF19HC BOTTOM MOUNT REACH-IN FREEZER



  
Please verify qualifying units by visiting:  
[www.energystar.gov/cfs](http://www.energystar.gov/cfs)

3779 Champion Blvd., Winston-Salem, NC 27105  
1-888-845-9800 Fax: 1-336-245-6453  
[Beverage-Air.com](http://Beverage-Air.com) [Sales@bevair.com](mailto:Sales@bevair.com)



# BEVERAGE-AIR

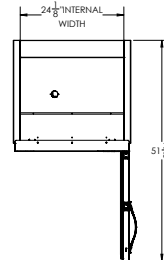
| MODEL                            | HBF19HC-1         |
|----------------------------------|-------------------|
| <b>EXTERNAL DIMENSIONAL DATA</b> |                   |
| Width Overall                    | 27 1/4"           |
| Depth Overall with Handle        | 27 3/4"           |
| Height Overall with Casters      | 84"               |
| Number of Doors                  | 1                 |
| Depth with Door Open 90°         | 51 3/8"           |
| Door Opening (in)                | 24 1/8" x 52 5/8" |
| <b>INTERNAL DIMENSIONAL DATA</b> |                   |
| NET Capacity (cubic ft.)         | 17.87             |
| Internal Width Overall (in)      | 24 1/8"           |
| Internal Depth Overall (in)      | 19 7/8"           |
| Internal Height Overall (in)     | 61 5/8"           |
| Internal Height Useable (in)     | 53"               |
| Number of Shelves                | 3                 |
| <b>ELECTRICAL DATA</b>           |                   |
| Full Load Amperes 115/60/1       | 7.5               |
| <b>REFRIGERATION DATA</b>        |                   |
| Horsepower*                      | 3/4               |
| Capacity (BTU/Hr)*               | 1927              |
| <b>SHIPPING DATA</b>             |                   |
| Gross Weight - Crated            | 380 lbs           |
| Height - Crated                  | 85"               |
| Width - Crated                   | 36"               |
| Depth - Crated                   | 34"               |

\*NOTE: Remote units are field wired and come with 6" legs.  
Refrigerant must be specified at time of order.

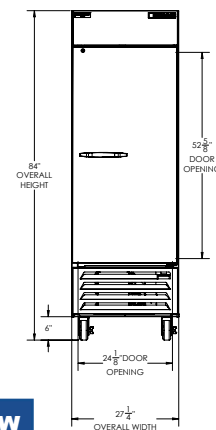
## Bottom Mount Reach-In Freezer Model: HBF19HC-1

### Model Views

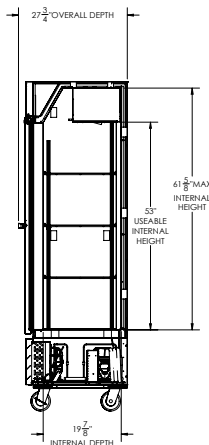
Required Clearance: Rear 3"



### PLAN VIEW



### ELEVATION VIEW



### SIDE VIEW

### \*ELECTRICAL CONNECTION



115/60/1  
NEMA 5-15P

Unit pre-wired at factory and include 8' long cord and plug set.



3779 Champion Blvd., Winston-Salem, NC 27105 1-888-845-9800 Fax: 1-336-245-6453 Beverage-Air.com Sales@bevair.com

an Ali Group Company



The Spirit of Excellence