



BEVERAGE-AIR

| | |
|-----------------|------------|
| Project: _____ | AIA# _____ |
| Item: _____ | |
| Location: _____ | SIS# _____ |
| Approved: _____ | |

MARKETMAX FREEZER

MMF23HC White Hinged Single Glass Door With Electronic Lock

Hydrocarbon Series

MODEL:

MMF23HC-1-W-IQ



3 Year Parts/Labor Warranty

Additional 4 Year Compressor Warranty

CABINET CONSTRUCTION

- Exterior finish is heavy duty steel with a white baked on durable coating
- Heavy duty interior construction includes white coated steel walls
- Modern one-piece grille
- Full electronic control
- Freezer has triple pane lowE argon filled glass door
- 120° stay open door feature, with automatic stay open feature
- Snap-in gaskets, easy to remove for cleaning or replacement
- LED lighting, standard
- Five (5) heavy duty epoxy coated wire shelves
- Four (4) shelf clips included per shelf
- Anti-microbial door handle
- Five brightly lighted sign panel options (at time of order)
- Self-contained bottom mount refrigeration system
- Maintains product temperatures down to -10

OPTIONS & ACCESSORIES

- White or stainless steel exterior option
- Black or stainless steel interior option
- Shelves black or white
- Shelf clips
- Flow track
- Gravity flo kits
- Price tag molding
- Custom sign panel
- 6" Seismic/flanged legs
- 3" or 6" Casters
- Door locks
- Remote option
(Refrigerant must be specified at time of order, see note on back on page)

ELECTRONIC SMART LOCK FEATURES

- Secure temperature-sensitive product for worry-free operation
- LED indicator to quickly view status
- Easy-access test switch for health inspectors
- Built-in safety feature allow escape in case of accidental lock-in

REFRIGERATION SYSTEM

- Uses environmentally friendly, energy efficient R290 refrigerant, and meets all regulatory requirements for CARB, SNAP, DOE & more
- Adaptive defrost
- Electric defrost with hot gas condensate evaporation

GLASS DOOR FREEZER: MERCHANDISER SERIES



Please verify qualifying units by visiting:
www.energystar.gov/cfs



3779 Champion Blvd., Winston-Salem, NC 27105
1-888-845-9800 Fax: 1-336-245-6453
Beverage-Air.com Sales@bevair.com



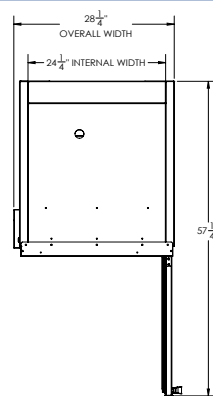
BEVERAGE-AIR

| MODEL | MMF23HC-1-W-IQ |
|----------------------------------|-------------------|
| EXTERNAL DIMENSIONAL DATA | |
| Width Overall | 28 1/4" |
| Depth Overall with Handle | 33 1/2" |
| Height Overall | 78" |
| Number of Doors | 1 |
| Depth with Door Open 90° | 57 1/4" |
| Door Opening (in) | 23 3/4" x 52 5/8" |
| INTERNAL DIMENSIONAL DATA | |
| NET Capacity (cubic ft.) | 22.5 |
| Internal Width Overall (in) | 24 1/4" |
| Internal Depth Overall (in) | 25 7/8" |
| Internal Height Overall (in) | 53" |
| Number of Shelves | 5 |
| ELECTRICAL DATA | |
| Full Load Amperes | 7.5 |
| REFRIGERATION DATA | |
| Horsepower* | 3/4 |
| Capacity (BTU/Hr)* | 1927 |
| WEIGHT DATA | |
| Gross Weight | 416 lbs |
| Height - Crated | 84" |
| Width - Crated | 30" |
| Depth - Crated | 36" |

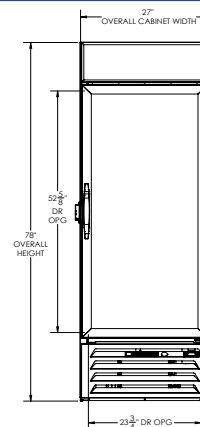
*NOTE: Remote units are field wired and comes with 6" legs.
Refrigerant must be specified at time of order.

Glass Door Merchandisers - Hinged Door Model Model: MMF23HC-1-W-IQ

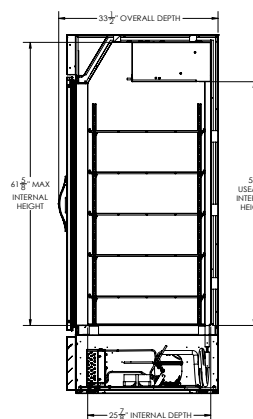
Model Views



PLAN VIEW



ELEVATION VIEW



SIDE VIEW

*ELECTRICAL CONNECTION



115/60/1
NEMA 5-15P

Units pre-wired at factory and include 8' long cord and plug set.



3779 Champion Blvd., Winston-Salem, NC 27105 1-888-845-9800 Fax: 1-336-245-6453 Beverage-Air.com Sales@bevair.com

an Ali Group Company



The Spirit of Excellence