



## SELF-CONTAINED PASS-THRU BACK BAR REFRIGERATOR 4-DOOR, SLIDING



SDPS60 shown



JOB	
AREA	
ITEM NO.	
MODEL NO.	

SDPS60	4-Door Model
--------	--------------



NSF/ANSI Standard 7 Listed for open food storage.  
*Note: Models furnished with wine temperature are listed for the storage and display of bottled and canned products only.*

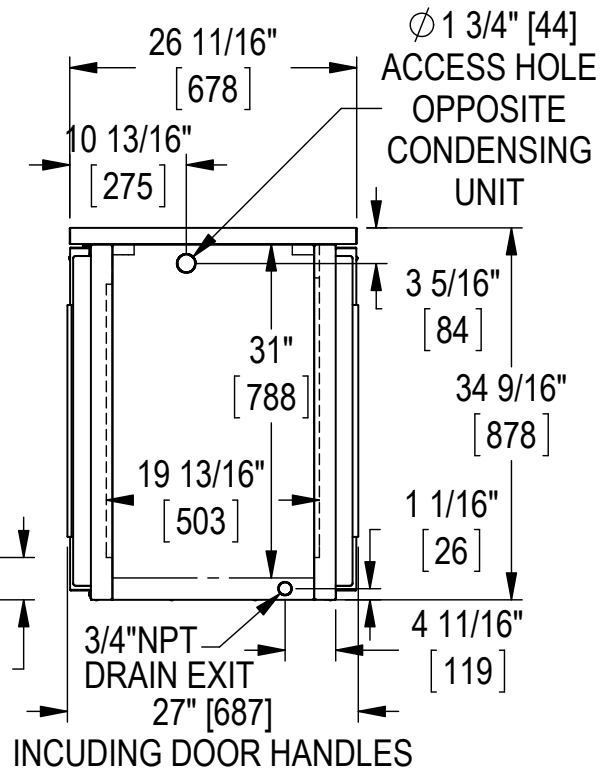
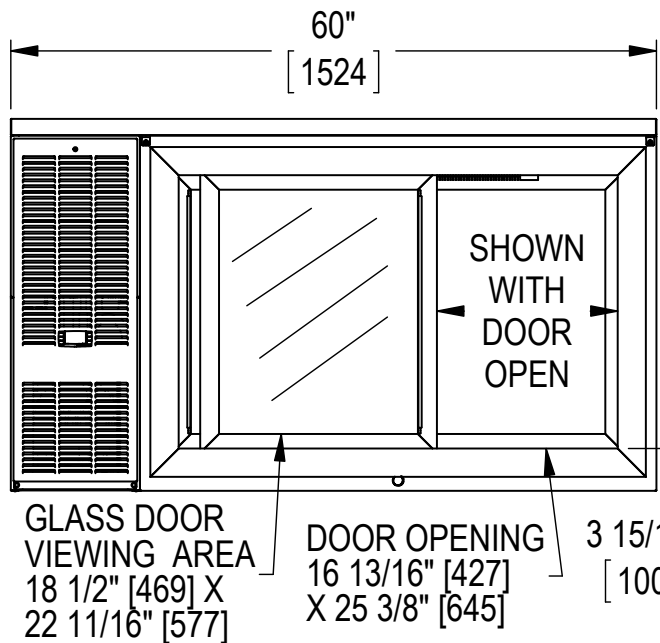
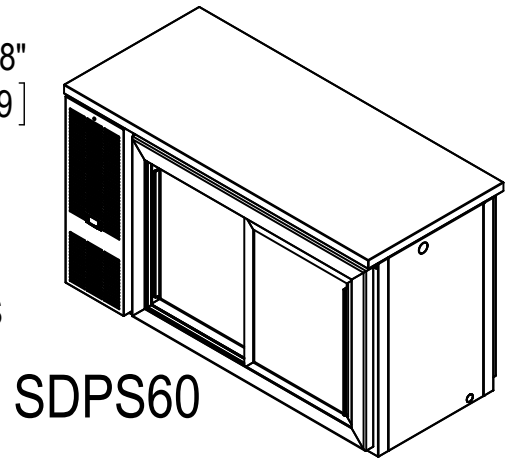
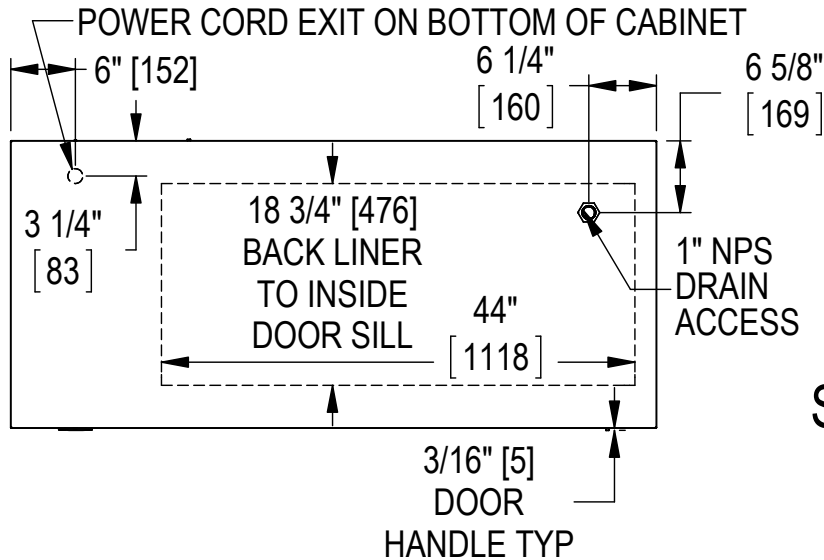
MODEL NUMBERS		SDPS60
NUMBER OF DOORS		4
EXTERIOR CABINET DIMENSIONS	Length - in. (mm)	60 (1524)
	Depth - in. (mm)	26 <sup>11</sup> / <sub>16</sub> (678)
	Height - in. (mm)	34 <sup>1</sup> / <sub>16</sub> (878)
INTERIOR CABINET DIMENSIONS	Length - in. (mm)	44 (1118)
	Depth - in. (mm)	18 <sup>3</sup> / <sub>4</sub> (476)
	Height - in. (mm)	28 <sup>1</sup> / <sub>2</sub> (724)
INTERNAL VOLUME Net. Cu. Ft. (Liters)		14.8 (419)
SHIPPING WEIGHT Lbs. (kg.)		380 (172)
ELECTRICAL SPECIFICATIONS	Electrical Supply	120 VAC/60 Hz/1 Ph
	Running Load Amps	5.5
	Electrical Connection	Cord connected
	Cord Plug Type	NEMA 5-15
	Cord Length	8'
	Defrost Initiation	Automatic
	Defrost Type	Off cycle
	Thermostat	Digital control
REFRIGERATION SPECIFICATIONS	Lighting Type	LED
	Horsepower	1/4
	Refrigerant	R290
	Refrigerant Charge oz.	7.0
	Factory Temperature Setting-Refrigerator F (C)	38° (3.3°)
	Temperature Range-Refrigerator F (C)	33°-40° (0.5°-4.5°)
	Factory Temperature Setting-White Wine F (C)	50°-55° (10.0°-13.0°)
	Factory Temperature Setting-Red Wine F (C)	60°-65° (15.5°-18.0°)
	Temperature Range-Wine F (C)	50°-65° (10.0°-18.0°)
	Condensing Unit Location	Left
	Expansion Device	Capillary tube
	Pull Out Condensing Unit	Yes
PLUMBING	Front Vented	Yes
	Floor Drain Included	Yes
Evaporator Condensate		Automatically

Form No. Z2412  
Rev. 02.01.2019



# SELF-CONTAINED PASS-THRU BACK BAR REFRIGERATOR 4-DOOR, SLIDING

**Note:** Open floor drain not provided on models intended for non-packaged food.



**California Prop 65 Notice:**



**WARNING:** The materials used in this product may contain chemicals known to the State of California to cause cancer and birth defects or other reproductive harm. For more information go to [www.P65Warnings.ca.gov](http://www.P65Warnings.ca.gov).

Form No. Z2412  
Rev. 02.01.2019