



# BEVERAGE-AIR

|                 |            |
|-----------------|------------|
| Project: _____  | AIA# _____ |
| Item: _____     |            |
| Location: _____ | SIS# _____ |
| Approved: _____ |            |

## RI REACH-IN REFRIGERATORS

RI18HC Half Solid, Half Glass Door Bottom Mount Refrigerator  
Hydrocarbon Series

**MODELS:**  
RI18HC-HGS



RI18HC-HGS

**3 Year Parts/Labor Warranty**  
**Additional 4 Year Compressor Warranty**

### CABINET CONSTRUCTION

- Stainless steel exterior and interior
- Full electronic control
- Interior LED Light
- Five (5) shelves standard
- One piece grille
- Self-closing doors with 120° Stay-open feature, on spring loaded hinges
- Snap-in magnetic door gasket
- Anti-Microbial door handles
- 3" heavy duty casters with two brakes standard
- Maintains temperature between 36° and 38°F

### OPTIONS & ACCESSORIES

- Epoxy shelves & clips
- 6" casters or 6" leg optional
- Wire shelf dividers
- Right or left hinged door
- Remote option (see note on back page)

### REFRIGERATION SYSTEM

- Refrigeration system uses R290 refrigerant to comply with all environmental concerns
- Automatic, non-electric defrost
- Epoxy coated evaporator coil

RI18HC BOTTOM MOUNT REACH-INS: RI SERIES MODELS



3779 Champion Blvd., Winston-Salem, NC 27105  
1-888-845-9800 Fax: 1-336-245-6453  
Beverage-Air.com sales@bevair.com



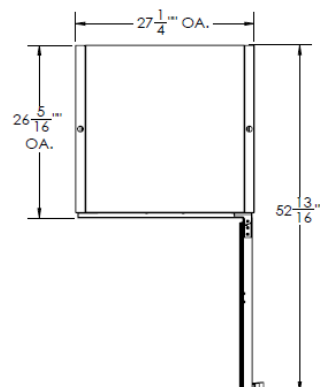
# BEVERAGE-AIR

| MODEL                            | RI18HC-HGS                        |
|----------------------------------|-----------------------------------|
| <b>EXTERNAL DIMENSIONAL DATA</b> |                                   |
| Width Overall                    | 27 1/4"                           |
| Depth Overall                    | 29 1/4"                           |
| Height Overall                   | 72 3/8"                           |
| Number of Doors                  | 2                                 |
| Depth with Door Open 90°         | 52 13/16"                         |
| Drawer Opening (in)              | 24 3/4" x 24 1/16"                |
| <b>INTERNAL DIMENSIONAL DATA</b> |                                   |
| NET Capacity (cubic ft.)         | 16.85                             |
| Internal Width Overall (in)      | 24 1/4"                           |
| Internal Depth Overall (in)      | 23 7/8"                           |
| Internal Height Overall (in)     | Front 52 15/16"<br>Rear 46 11/16" |
| Number of Shelves                | 5                                 |
| <b>ELECTRICAL DATA</b>           |                                   |
| Full Load Amperes 115/60/1       | 5.5                               |
| <b>REFRIGERATION DATA</b>        |                                   |
| Horsepower                       | 1/4                               |
| Capacity BTU                     | 1997                              |
| <b>WEIGHT DATA</b>               |                                   |
| Gross Weight (Crated Lbs)        | 334 lbs                           |
| Height - Crated                  | 75"                               |
| Width - Crated                   | 30"                               |
| Depth - Crated                   | 32"                               |

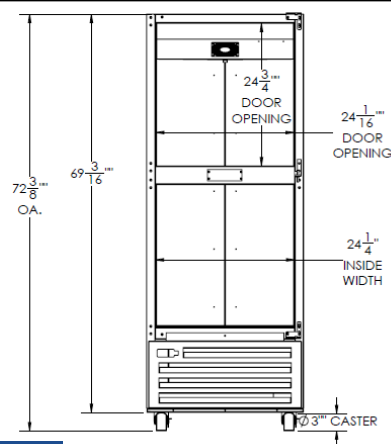
\*NOTE: Remote units are field wired and come with 6" legs. Refrigerant must be specified at time of order.

## Bottom Mount Reach-In Half Solid Half Glass Models: RI18HC-HGS

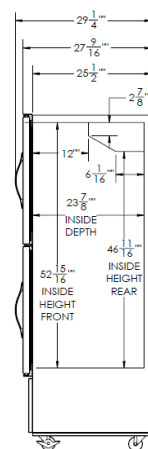
### Model Views



### Plan View



### Elevation View



### Side View

## ELECTRICAL CONNECTION



115/60/1  
NEMA-5-15P

Unit pre-wired at  
factory and include 8'  
long cord and plug set.



an Ali Group Company



The Spirit of Excellence

3779 Champion Blvd., Winston-Salem, NC 27105  
1-888-845-9800 Fax: 1-336-245-6453  
Beverage-Air.com sales@bevair.com