

# GSW WOK RANGE ACCESSORIES

## Basket Holder



Item No.	Description
B-BH9	Ø9"
B-BH11	Ø11"

## S/S Vegetable Basket



Item No.	Description
STR-P09	Ø9" (Wire)
STR-P11	Ø11 (Perforated)
STR-A11	Ø11 (Perforated)

## Cast Iron Rim



Item No.	Dimension (in)
WR-CIR133	Ø13.3 Opening

## Stainless Steel Sauce Cart

### C-SCE

Adjustable height range 34"~36"  
12-1/2" clearance between shelves  
Top pan removable

## Gas Valve Handle



Item No.	Description
WR-GVH	For WR-GV

## Wok Range Rectangle Frame



Item No.	Description
GRE-WSF8	8-1/2 x 10-1/2 (O.D) 6-1/8 x 8-1/2 (O.D)
GRE-WSF13	13-5/8 x 10-1/2 (I.D) 11-1/2 x 8-1/2 (I.D)

## Manual Wok Range Faucet



Item No.	Description
AA-513G	14" Spout Heavy Duty Brass
AA-513GS	14" Spout Full Stainless Steel

## Auto Wok Range Faucet



Item No.	Description
AA-510G	14" Spout 3/8" Inlet
AA-511G	17" Spout 3/8" Inlet
AA-517G	14" Spout 1/2" Inlet



## Stainless Steel Sauce Pan

Item No.	Description
P-SAPA6	20" x 12" x 3-3/4"



## Wok Range Reducer

Item No.	Description
WR-RE1813	From 18" to 13"
WR-RE2013	From 20" to 13"
WR-RE2213	From 22" to 13"

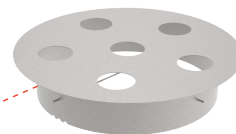


## S/S Wok Range Soup Pot

Item No.	Description	Gallon
PT-2317	For 18" Range	7.4
PT-2319	For 20" Range	9.8



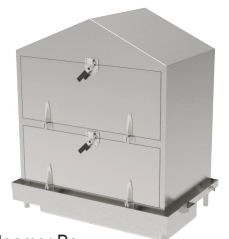
## Custom Make Accessory Available



Soup Pot Riser with Steamer & Noodle Cooker



Double Rice Roll Steamer



Steamer Box