

Cleveland

MODULAR BASE WITH KETTLE(S)

DIRECT STEAM, ONE OR TWO, 6 GALLON KETTLE(S),
CABINET BASE: 24" (600MM) OR 36" (900MM) WIDE

Project _____
Item _____
Quantity _____
FCSI Section 11400 _____
Approved _____
Date _____

Modular Bases & Equipment Stands

Models

• 24-DM-K6 • 36-DM-K66 • 36-DM-K1010



Standard Features

- Factory assembled Kettle/Modular Base combination with one or two 6 gallon kettles or two 10 gallon kettles for direct connection to steam from another source
- Steam Control Kit: includes needle type Steam Control Valve(s), Steam Trap, Condensate Strainer, Check Valve, nipples and fittings, factory assembled and mounted on kettle(s)
- Type 430 Stainless Steel exterior enclosure, kettle(s) and table top (with drain Trough which has 1.50" diameter male drain); #4 exterior finish
- 6/10 gallon kettle(s) are 2/3 Steam Jacketed and include Lift-Off Cover(s)
- Hot and Cold Water Faucet with Swing Spout
- Kettle(s) have 50 psi Steam Jacket Rating, 50 psi chrome plated Safety Valve(s) and Manual Tilting, balanced design
- Tilt Handles can be mounted on either side of kettle(s)
- Adjustable Flanged Feet (FF-A)
- Stainless Steel Base Frame (FSS)

Options & Accessories

- Type 316 Stainless Steel Kettle interior(s) for high acid food products (316)
- Food Strainers (FS)
- Pressure Reducing Valve for incoming supply over 50 psi (PRV)

Short Form Specifications

Shall be CLEVELAND, Direct Steam, Modular Cabinet Base with one or two 6 gallon kettles or two 10 gallon kettles, Model _____ DM-K _____ Type 430 Stainless Steel exterior enclosure, Table Top and 4 Level adjustable Feet. 2/3 Steam Jacketed, type 304 Stainless Steel kettle(s) with 50 psi Steam Jacket Rating. Needle type Steam Control Valve on each kettle. To operate connect directly to a steam source supplying from 5 to 10 psi steam. Steam Condensate Trap and Strainer, factory assembled and installed. Includes Hot and Cold Water Faucet with Spring Spout and Lift-Off Kettle Cover(s).

KE004046-127

Cleveland

Modular Bases & Equipment Stands

WATER QUALITY REQUIREMENTS (Boilers, Generators)

TTDS:	50-250 ppm
Hardness:	50 - 200 mm (3 - 12 gpg)
pH value:	7.0 - 8.5
CL (Chloride):	max 50 ppm
Cl2 (free chlorine):	max 0.1 ppm
SiO2 (silica):	max 13 ppm
NH2Cl: (mono-chloramine)	max 0.1 ppm
Total Alkalinity:	50 - 100 ppm

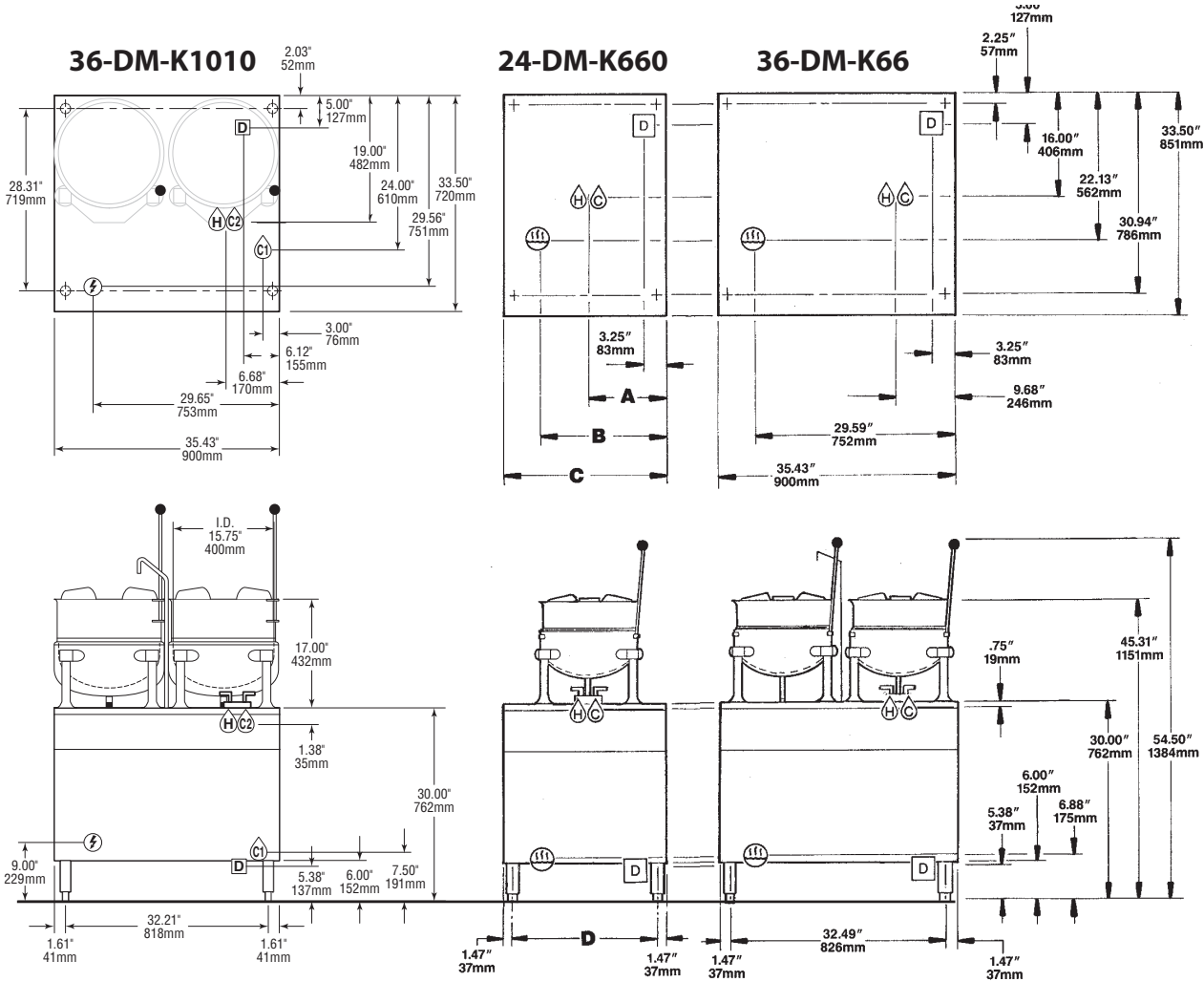
CAPACITIES

(in 4 oz. servings)

(Other sizes may be calculated.)

6 gallon / 23 liters 160 per kettle

10 gallon / 36 liters 320 per kettle



DIRECT STEAM (S)	WATER (H/C)	DRAINAGE (D)	CLEARANCE (C)
Steam Supply: <ul style="list-style-type: none">• 1/2" IPS minimum line.• Operating Pressure 5 to 50 psi with 55 psi Safety Valve.	35 psi minimum 60 psi maximum • 1/4" NPT hot and cold water for kettles.	1 1/2" IPS common drain. Do not connect other units to this drain. Do not use PVC pipe for drain.	Right - 3", Left - 3", Rear - 3" (12" on control side if adjoining wall or equipment is over 30" high for service access) Contact factory for variances to clearances.

Model No.	A	B	C	D
24-DM-K66	11.81 300	17.78 452	23.62 600	20.69 525

NOTES:
Cleveland Range reserves right of design improvement or modification, as warranted.
Many regional, state and local codes exist and it is the responsibility of the owner and installer to comply with the codes.
Cleveland Range equipment is built to comply with applicable standards for manufacturers. Included among those approval agencies are U.L./NSF#4 and CSA (AGA, CGA).

(NOT TO SCALE)

760 Beta Drive, Unit D
Mayfield Village, Ohio 44143

Tel 1.216.481.4900
Fax 1.216.481.3782
Email steam@clevelandrange.com

www.clevelandrange.com
Section 4, Page 48
04 / 2019

Timeless Quality, Trusted For Life®