



Item No. _____

340

Frozen Uncarbonated Beverage Freezer

Single Flavor

Features

Vary your menu by offering smoothies or frozen cocktails, fruit juices, coffees, cappuccino, and tea slush beverages, all served at the desired thickness.

Freezing Cylinder

One, 7 quart (6.6 liter).

Mix Hopper

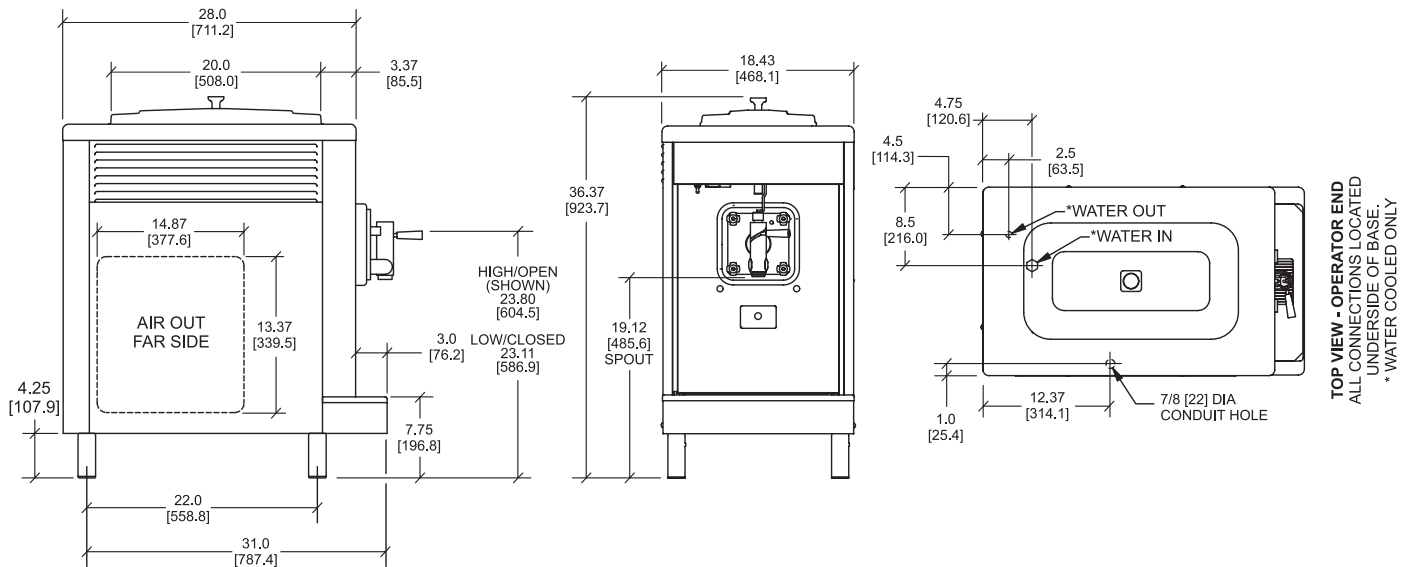
One, 20 quart (18.9 liter). Optional refrigerated hopper approved for dairy products.

Indicator Light

Add Mix light alerts the operator to add mix.

Automatic Consistency Control

A specially designed viscosity control automatically maintains superior product quality. Adjustable control allows the operator to serve a wide variety of frozen beverages at the desired thickness.



FIGURES IN BRACKETS INDICATE MILLIMETERS. DECIMAL DIMENSIONS EQUAL TO (PLUS OR MINUS 1/16 INCH [1.5mm]).

TOP VIEW - OPERATOR END
ALL CONNECTIONS LOCATED
UNDERSIDE OF BASE.
* WATER COOLED ONLY

Weights	lbs.	kgs.
Net	253	114.8
Crated	295	133.8

*For reference only

Volume	cu. ft.	cu. m.
	17.7	0.52

Dimensions	in.	mm.
Width	18-7/16	468
Depth	31	787
Height	36-3/8	924
Counter Clearance	4-1/4	108

*Mounted on standard legs

Electrical	Maximum	Minimum	Poles (P)
	Fuse Size	Circuit Ampacity	
115/60/1 Air	30	21	2P 3W
115/60/1 Water	30	21	2P 3W
208-230/60/1 Air	15	12	2P 3W
208-230/60/1 Water	15	11	2P 3W
220-240/50/1 Air	15	10	2P 3W

This unit may be manufactured with other electrical characteristics and may have additional regulatory agency approvals. Consult the local Taylor distributor for other electrical characteristics and agency approvals based on specific electrical and country requirements.

(For exact electrical information, approval marks, and refrigerant, always refer to the data label of the unit.)

Continuing research results in steady improvements; therefore, these specifications are subject to change without notice.

Bidding Specs

Electrical: Volt _____ Hz _____ ph _____
Neutral: Yes No Cooling: Air Water NA

Options:

All options may not be available in combination with others or with all electrical or cooling configurations. Please consult your local Taylor distributor.

Authorized Taylor Distributor

Specifications

Electrical

One dedicated electrical connection is required. See the electrical chart for the proper electrical requirements. Manufactured to be permanently connected. Consult your local Taylor distributor for cord and receptacle specifications as local codes allow.

Beater Motor

One, 1/4 hp.

Refrigeration System

115 volt, one, 6,000 BTU/hr. R449A.

All other electrical characteristics: one, 7,500 BTU/hr. R449A. (BTUs may vary depending on compressor used.)

Air-Cooled

Minimum Clearance: 6" (152 mm) on both sides. Install the skirt provided and place the rear of the unit against the wall to prevent recirculation of warm air. Minimum air clearances must be met to ensure adequate airflow for optimum performance.

Water-Cooled

Water inlet and drain connections underside of base 3/8" FPT.

Options

- Available as Model 340D, with Refrigerated Hopper, 1/2 HP Beater Motor, and Beater Cycle Timer. Maintains mix below 41°F (5°C). Approved for dairy and non-dairy products.
- Remote Auto Fill System

Accessories

- Syrup Jars and Brackets



750 N. Blackhawk Blvd.
Rockton, Illinois 61072
www.taylor-company.com