



NOR-LAKE, INCORPORATED  
727 Second Street  
Hudson, Wisconsin 54016

800-955-5253  
715-386-2323  
866-961-5253 Parts  
800-388-5253 Service  
715-386-6149 FAX  
www.norlake.com

## ADVANTEDGE™ UNDERCOUNTER / WORKTABLE FREEZERS



PROJECT:  
.....  
ITEM NUMBER:  
.....  
MODEL NUMBER:  
.....

UNDERCOUNTER / WORKTABLE FREEZERS

### SPECIFICATIONS FOR: NLUF27, NLUF48, NLUF60

- Finish: Stainless steel interior and exterior
- Insulation: Complete cabinet and doors are foamed-in-place with polyurethane insulation
- Hardware: Curved handle with recessed pocket; one vinyl coated shelf per door; 6" overall height casters
- Electrical: 115 volt, 60 Hz, 1 phase with cord and plug
- Refrigeration: Self-contained forced air refrigeration system. Condensate is collected and automatically evaporated from an energy efficient vaporizer. Refrigerant flow controlled by a capillary tube. R290 refrigerant. Temperature range: -10°F to 0°F
- Approvals: UL, C-UL Safety and ETL Sanitation listed\*\*, ADA compliant\*\*\*

### STANDARD FEATURES

- Air cooled condensing unit
- Automatic condensate vaporizer
- Automatic defrost
- Capillary tube system
- Casters
- Curved handle with recessed pocket
- Magnetic gaskets
- Self-closing doors
- Stainless steel interior and exterior
- One interior shelf per door
- Field reversible door on NLUF27 model
- UL, C-UL Safety and ETL Sanitation listed \*\*
- Warranties: 3 year parts & labor, 5 year compressor

### OPTIONAL FEATURES\*

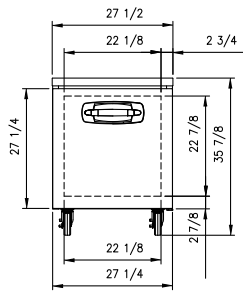
- Additional shelves
- Stainless steel backsplash
- Low profile casters\*\*\*
- Single and double overself assemblies
- 6" legs in lieu of casters (shipped loose)

\* Most options are available two weeks from receipt of order. Please contact us for specific questions.

\*\* C-UL is Underwriters Laboratories Safety Certification Mark which indicates that UL has tested the equipment to applicable CSA Standards.

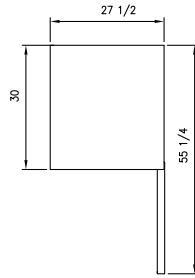
\*\*\* ETL Sanitation is Intertek Sanitation Mark which indicates that Intertek has tested the equipment to applicable NSF Standards.

\*\*\* Casters available for 34" or 32" overall cabinet height.

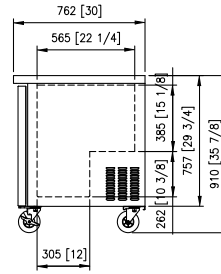


FRONT VIEW

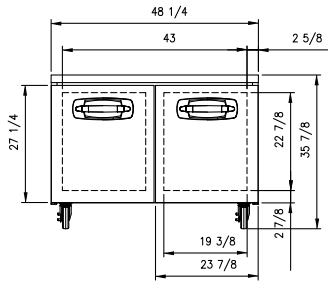
NLUF27



TOP VIEW

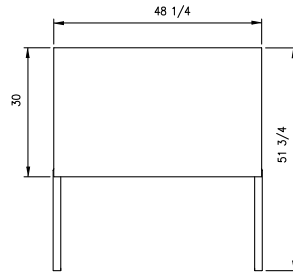


ALL MODELS  
SIDE VIEW

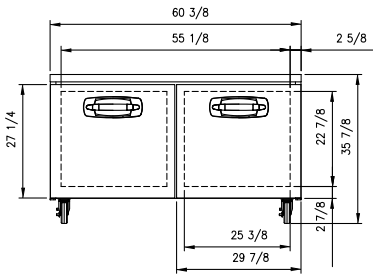


FRONT VIEW

NLUF48

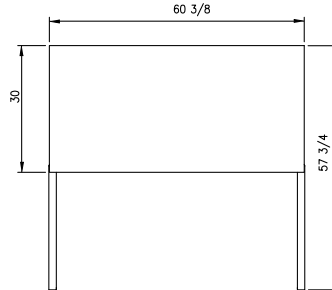


TOP VIEW



FRONT VIEW

NLUF60



TOP VIEW

**SPECIFICATIONS**

Models	NLUF27	NLUF48	NLUF60
Crated Weight (lbs) (kg)	152 (69)	238 (108)	276 (125)
Crated Height (in) (cm)	36 (91)	36 (91)	36 (91)
Crated Width (in) (cm)	30-1/8 (77)	51-1/4 (130)	63 (160)
Crated Depth (in) (cm)	33-1/2 (85)	33-1/2 (85)	33-1/2 (85)
Interior Height (in) (cm)	25-1/2 (65)	25-1/2 (65)	25-1/2 (65)
Interior Width (in) (cm)	23 (58)	43-3/4 (111)	55-7/8 (142)
Interior Depth (in) (cm)	21-1/2 (55)	21-1/2 (55)	21-1/2 (55)
Overall Height (in) (cm)	35-7/8 (91)	35-7/8 (91)	35-7/8 (91)
Overall Width (in) (cm)	27-1/2 (70)	48-1/4 (123)	60-3/8 (153)
Overall Depth (in) (cm)	30 (76)	30 (76)	30 (76)
Gross Cubage (CuFt) (L)	6.0 (170)	11.4 (323)	14.6 (413)
Number of Shelves	1	2	2
Shelf Area (SqFt) (SqM)	3.4 (0.32)	6.5 (0.60)	8.3 (0.77)
Number of Casters	4	4	4
Condensing Unit Size	1/5 HP	1/2 HP	1/2 HP
Refrigerant	R290	R290	R290
Electrical Characteristics	115/60/1	115/60/1	115/60/1
Cord and Plug Furnished	Yes	Yes	Yes
NEMA Plug Configuration	5-15P	5-15P	5-15P
Total Amp Draw	3.5	7.5	7.5

Specifications subject to change without notice.



Revision Date: 12/20  
Part Number: 146623