



RESOURCE

DUAL TEMP

## Slim Line Food Wells

### Model

E-STSL-2

E-STSL-3

E-STSL-4

### STANDARD FEATURES

- 3" recessed top edge to comply with NSF-7 requirements
- Single control for changing from hot to cold operation
- Easy access temperature & function control panel attached to a 24" long flexible conduit for optional counter mounting
- Self contained drop-in design
- Hold standard 12" by 20" food pans and fractional sized pans
- Stainless steel top and liner for maximum strength and durability
- 1" drains for ease of cleaning
- Type 134A or 404A CFC free refrigerant
- Fully insulated, CFC free, foamed-in place insulation keeps food cold while saving energy
- Recessed ledge for pan support and colder, fresher products
- Quick & easy service with sight glass, service valves, filter/dryer and receiver

### DESCRIPTION

Dual Temperature Hot & Refrigerated Drop-In Cold Pans are two units in one; from a heated Bain Marie to a refrigerated cold pan with the flip of a switch. All models are completely self-contained in one to six-well models are CFC free and are recessed 3" to comply with NSF-7 performance requirements.

### SPECIFICATIONS

**Exterior** – One-piece top flange and coved-corner interiors constructed of 18 gauge stainless steel. Exterior body constructed of heavy gauge, corrosion resistant steel. Condensing unit mounted on corrosion resistant frame below the cold pan.

**Interior** – CFC free foamed-in-place insulation through-out, 1" drain located in the center for easy cleaning. Ledge is recessed 3" to comply with NSF-7 requirements, allowing a layer of air to insulate food and for pan support.

**Refrigeration** – Air cooled, type 134A or 404A CFC free refrigerant system featuring wrapped coil construction on both sides and bottom, individual thermostats, and on/off switch, 8 ft. cord and plug set NEMA 5-15P (120V models). Refrigeration system features sight glass, easy service valves, dryer/filter and receiver.

**Heating** - Automatic water-fill with high-limit protection featuring a water sensor and solenoid valve to maintain proper water levels. And efficient electric immersion heating system transfers heat directly to the water while a positive-off thermostat controls provides adjustable and consistent temperatures. Designed for wet operation only.

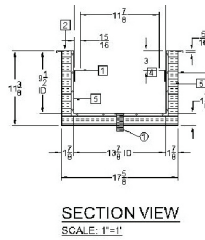
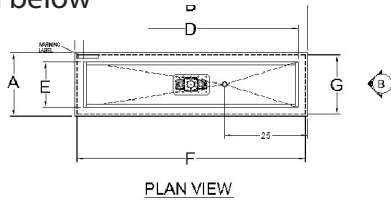
# Slim Line Food Wells

□ E-STSL-2

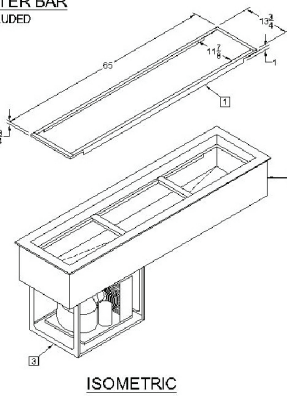
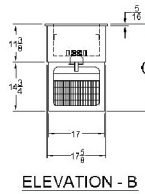
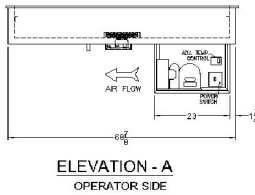
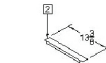
□ E-STSL-3

□ E-STSL-4

Model E-STSL-3  
shown below



**Note:** Specifications are subject to change without notice and are not intended for installation purposes. See installation instructions prior to installing the unit.



## SPECIFICATIONS

Model Number	OVERALL DIMENSIONS			INTERIOR DIMENSIONS		CUT OUT DIMENSIONS	
	A Front to Back Inches (MM)	B Left to Right Inches (MM)	C Height Inches (MM)	D Front to Back Inches (MM)	E Left to Right Inches (MM)	F Front to Back Inches (MM)	G Left to Right Inches (MM)
E-STSL-2	19-1/8 (485)	48-3/4 (1238)	26-1/8 (667)	43-1/2 (1114)	13-7/8 (353)	47-1/2 (1207)	17-7/8 (454)
E-STSL-3	19-1/8 (485)	70-3/8 (1788)	26-1/8 (667)	65-1/8 (1654)	13-7/8 (353)	69-1/8 (1756)	17-7/8 (454)
E-STSL-4	19-1/8 (485)	92 (2337)		86-3/4 (2204)	13-7/8 (353)	90-3/4 (2305)	17-7/8 (454)

## SHIPPING INFORMATION

Model Number	WEIGHTS		CARTON DIMENSIONS			CRATE SIZE	
	SHIPPING WEIGHTS POUNDS (KG)	INSTALLED WEIGHTS POUNDS (KG)	WIDTH INCHES (MM)	DEPTH INCHES (MM)	HEIGHT INCHES (MM)	CUBIC FEET	CUBIC METERS
E-STSL-2	220 (100)	190 (87)	29 (737)	34 (864)	32 (813)	18.26	0.52
E-STSL-3	240 (108)	210 (96)	29 (737)	48 (1220)	32 (813)	25.78	0.73
E-STSL-4	275 (124)	240 (109)	29 (737)	62 (1575)	32 (813)	33.3	0.94

## POWER SUPPLY

Model Number	VOLTS	HP	AMPS	PHASE	POWER SUPPLY
E-STSL-2	208/240	1.9/2.5	9.0/10.4	SINGLE	*
E-STSL-3	208/240	3.0/4.0	14.4/16.7	SINGLE	*
E-STSL-4	208/240	3.8/5.0	18.1/20.8	SINGLE	*

## POWER SUPPLY-REFRIGERATION OPERATION

Model Number	VOLTS	HP	AMPS	PHASE	POWER SUPPLY	REFRIGERANT
E-STSL-2	115	1/4	4.9	SINGLE	*	134A
E-STSL-3	115	1/3	5.6	SINGLE	*	404A
E-STSL-4	115	1/2	6.4	SINGLE	*	404A

\* All model permanently field wired connected. Power supply single phase, 3-wire, 120/208-240V, L2-N 120VAC

\*L1 to L2 must be 240 or 208 volts AC. L2 to Neutral must be 120 volts AC.

\*All AFCHCP models feature automatic water fill systems and require a water supply connection. Please refer to the operator's manual and installation instructions for details.